



REPUBLIC OF MOLDOVA

Phone: +373 22 50 28 10

Fax: +373 22 50 28 13

AFS: LUKKYOYX

Email: aim@moldatsa.md

URL: aim.moldatsa.md

AERONAUTICAL INFORMATION MANAGEMENT

Intreprinderea de Stat
Pentru Utilizarea Spatiului Aerian
si Deservirea Traficului Aerian
"MOLDATSA", Bd. Dacia 80/4
MD-2026 CHISINAU

AIP SUP: 001/2023

Effective Date: 05-Jan-2023

End Date: 04-Feb-2023

FIR CHISINAU TEMPORARY AIRSPACE USE CONDITIONS

This Supplement replace AIP SUP 014/2022 and NOTAM A0218/22.

BASED ON AIRSPACE USE CONDITIONS THE FIR CHISINAU IS TEMPORARY CONFIGURED AS BELOW (SEE APPENDIX):

WEST PART WITH FOLLOWING LIMITS:

HORIZONTAL LIMITS:

481439N 0264935E - 481839N 0274319E - 475057N 0284406E - 472351N 0285959E - 470714N 0291023E - 463810N 0293434E - 463506N 0285540E - 453849N 0281026E - 452824N 0281218E - along border MOLDOVA - ROMANIA.

VERTICAL LIMITS: FL660 / GND.

This part of the airspace will be used subject to the following conditions:

1. Flights of civil aircraft from and to aerodromes located in this part of the airspace shall be conducted in accordance with the applicable published standard flight procedures, based on the current airspace configuration.
2. Non-available instrument flight procedures and standard arrival/departure for LUKK aerodrome are listed below.
3. The allocation and activation of temporary reserved areas published in AIP are subject of Airspace Management Cell's decisions and procedures.
4. Flights of general aviation aircraft shall be performed only after acceptance of the Flight Plans (FPL) by the Air Traffic Management Service of S.E. MOLDATSA. In this respect, it is mandatory to submit flight plans to fmp@moldatsa.md at least 60 minutes before the scheduled time for the start of the flight. The flight plan must indicate the purpose of the flight.

The flights of UAV/UAS shall be performed in accordance with the Order on establishing the conditions for conducting air operations with UAV/UAS in the airspace of the Republic of Moldova no. 31 / GEN of 28.07.2020.

For aerodrome LUKK:

A. Standard Instrument Arrivals (STAR)

The following STAR for LUKK RWY 08/09 are available:

- LIPTA2A;
- BUSES5A;
- UNIRA6A;
- ERADA2D.

The following STAR for LUKK RWY 26/27 are available:

- ERADA2G;
- UNIRA8E;
- BUSES7E;
- LIPTA2E.

B. Instrumental Approach Procedures (IAP)

Expect only radar vectoring for the following instrumental approach procedures:

- LUKK RWY 26: RNP from LUSAV;
- LUKK RWY 27: RNP from LUSAV.

C. Standard Instrument Departures (SID)

The following SID are available:

- LUKK RWY 08: LOBRO2K, LIPTA3K, POGAV6K, NUNTA2K, UNIRA8K, ERADA2M, NETED1K;
- LUKK RWY 09: LOBRO2S, LIPTA2S, POGAV2S, NUNTA2S, UNIRA2S, ERADA2S, NETED1S;
- LUKK RWY 26: LOBRO2P, LIPTA2P, POGAV6P, NUNTA2P, UNIRA6P, ERADA2T;
- LUKK RWY 27: LOBRO2V, LIPTA2V, POGAV2V, NUNTA2V, UNIRA2V, ERADA2V.

EAST PART – RESTRICTED ‘LUR TEMP’, WITH FOLLOWING LIMITS:

HORIZONTAL LIMITS:

481502N 0263725E - along border MOLDOVA - UKRAINE - 452824N 0281218E - along border MOLDOVA - ROMANIA - 453849N 0281026E - 463506N 0285540E - 463810N 0293434E - 470714N 0291023E - 472351N 0285959E - 475057N 0284406E - 481839N 0274319E - 481439N 0264935E - along border MOLDOVA - ROMANIA - 481502N 0263725E.

VERTICAL LIMITS: FL660 / GND.

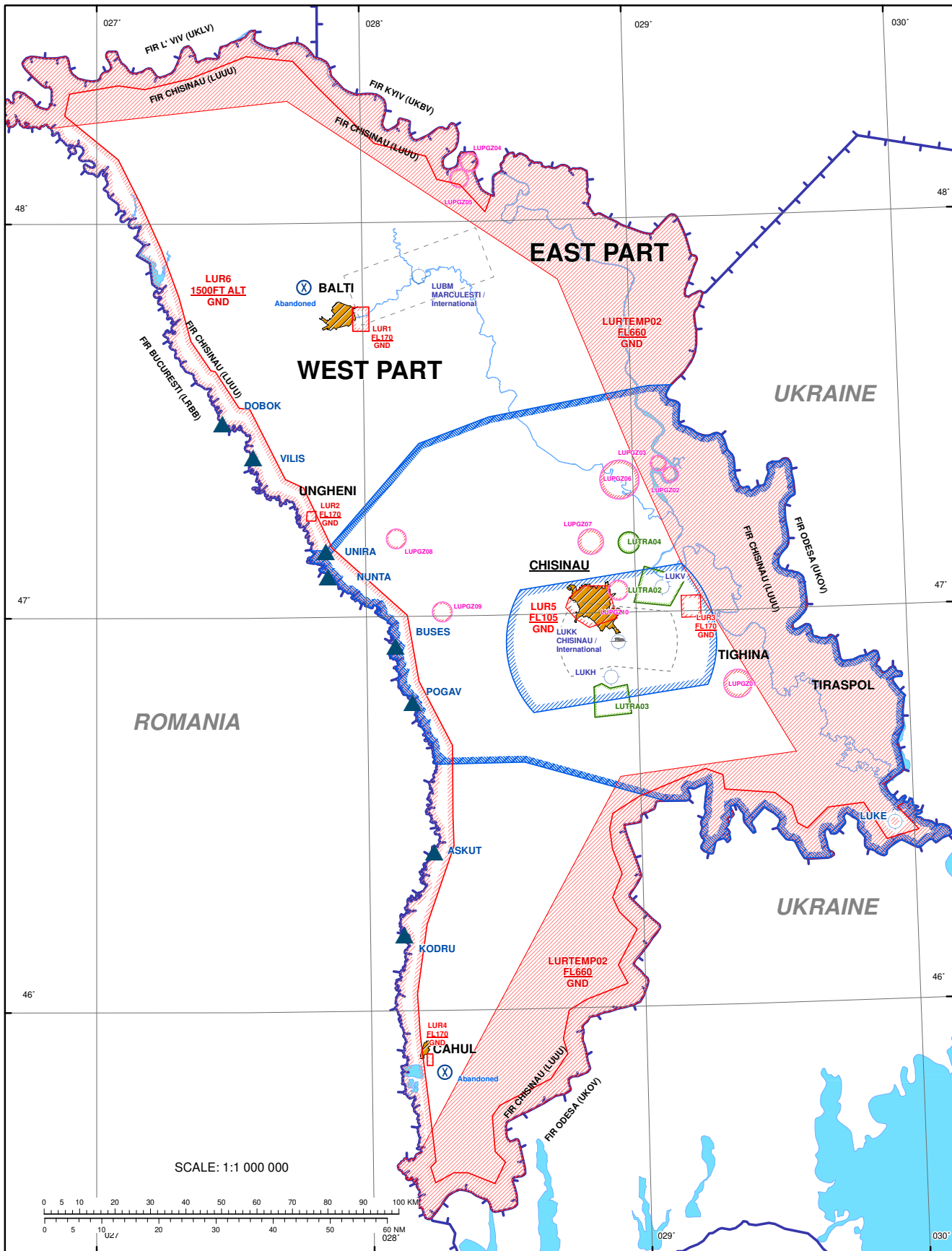
As a rule, transit flights and flights to and from aerodromes are not allowed in this part of airspace.

However, by applying the exceptions provided in p.25 of Disposition no.1 of the National Commission on Exceptional Situation of 24.02.2022, in the restricted part of the airspace, may be permitted some categories of flights, ensuring that the following conditions are met:

1. Application for the approval of flight in the restricted part shall be submitted to CAA dri@caa.gov.md, 7 working days in advance to the date of planned flight;
2. The scope of flight is to perform either agricultural protection operations, or environmental protection operations, or operations related to the food industry, or operations related to energy security, or operations for the purpose of maintaining communications systems, or training flights, or operations for photography/ cartography on the request of the state's institutions or authorities, or search-and-rescue operations.
3. Additional safety and security conditions communicated in the issued by CAA permission, which may derive from the security risks identified at the date of issuance of the permission.

The initiation of a flight that was issued with permission, as stated above, shall be done only after the acceptance of the Flight Plan by the Air Traffic Management Service (ATM) within S.E. MOLDATSA. In this respect, it is mandatory to submit flight plans to fmp@moldatsa.md at least 180 minutes before the planned time of departure.

APPENDIX- FIR CHISINAU TEMPORARY AIRSPACE USE CONDITIONS



- END -